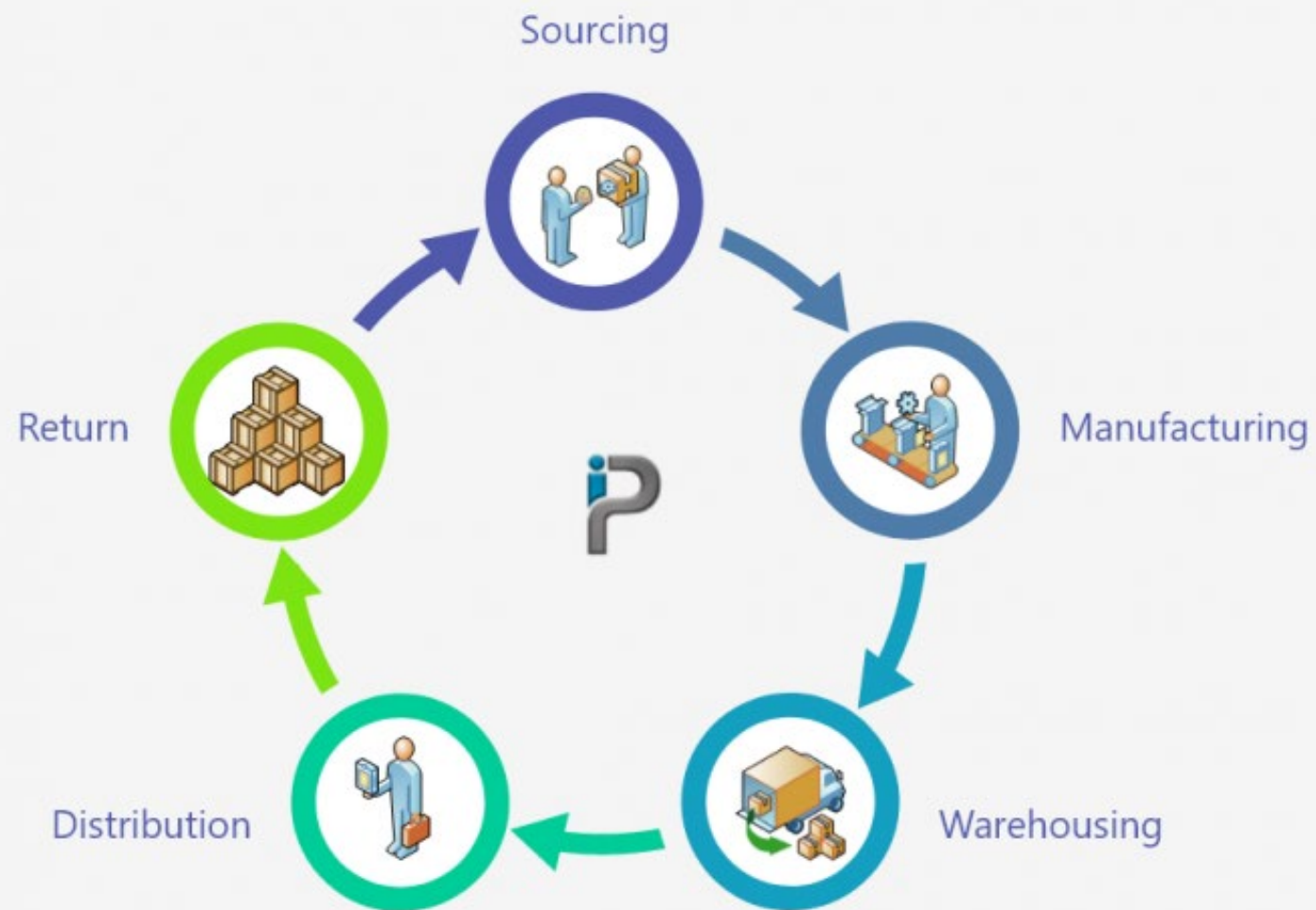




 **Precify Impex Pvt Ltd**

**Engineering Services, Sourcing  
and Supply Chain Solutions**


*Custom Solutions to Suit Your Need*



Precify Impex is a pioneering next-generation global technology company that provides engineering and design services supported with outsourcing and Supply chain management to help enterprises restructure their businesses and realize value.

We work closely with customers in designing the Engineering Process for the identified project supported with Feasibility studies, Detailed Project Reports, Procurement Support, conceive designs, Inspection and Testing Support and successfully implement them with management philosophy that focuses on building a long-term customer relationship.

# Mission



To offer consistent support for Products and Services with uncompromising quality supported by continuous improvements and innovations thereby exceeding Customer's expectation.

To ensure the customer satisfaction by offering an extensive range of engineering services to meet their requirement and help them take up new projects by assisting them in research & Development, designing of process, implementing and testing of the new innovative ideas in project.

To reengineer the supply chain system of customers and be a catalyst in enhancing their competencies by assisting them related to design, analysis and implementation of integrated systems in manufacturing products and the services that they offer

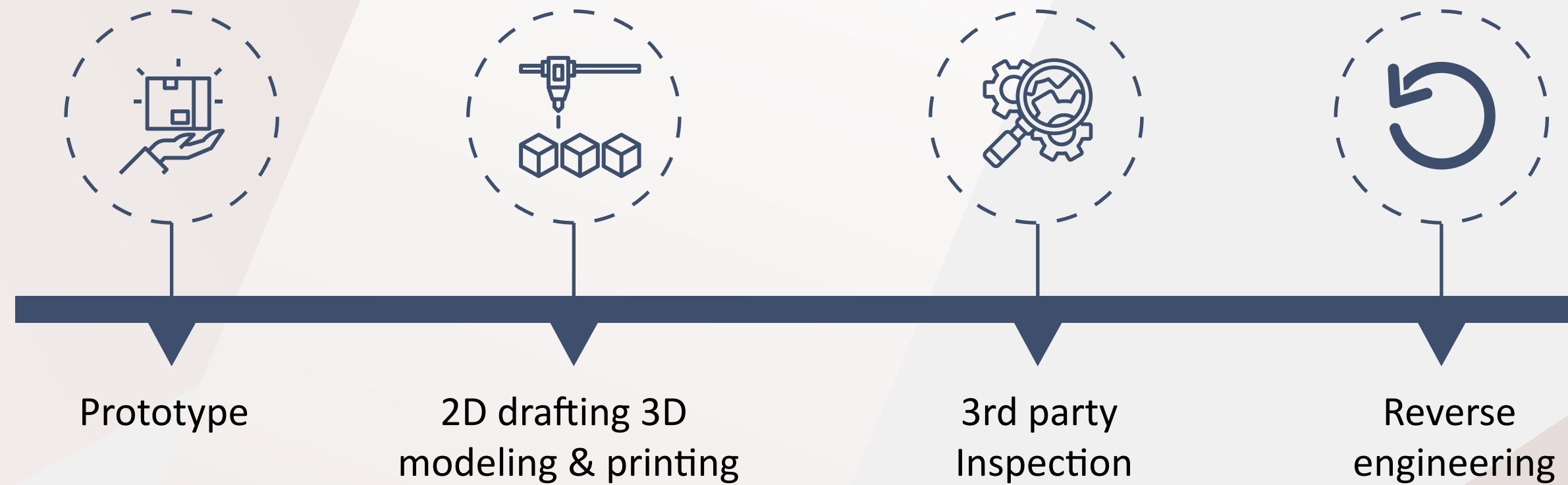
# Our Values

To be globally recognized as a leader in offering Industrial Engineering Services, research and enhance with the application of new Technology to create real business value for our customers.

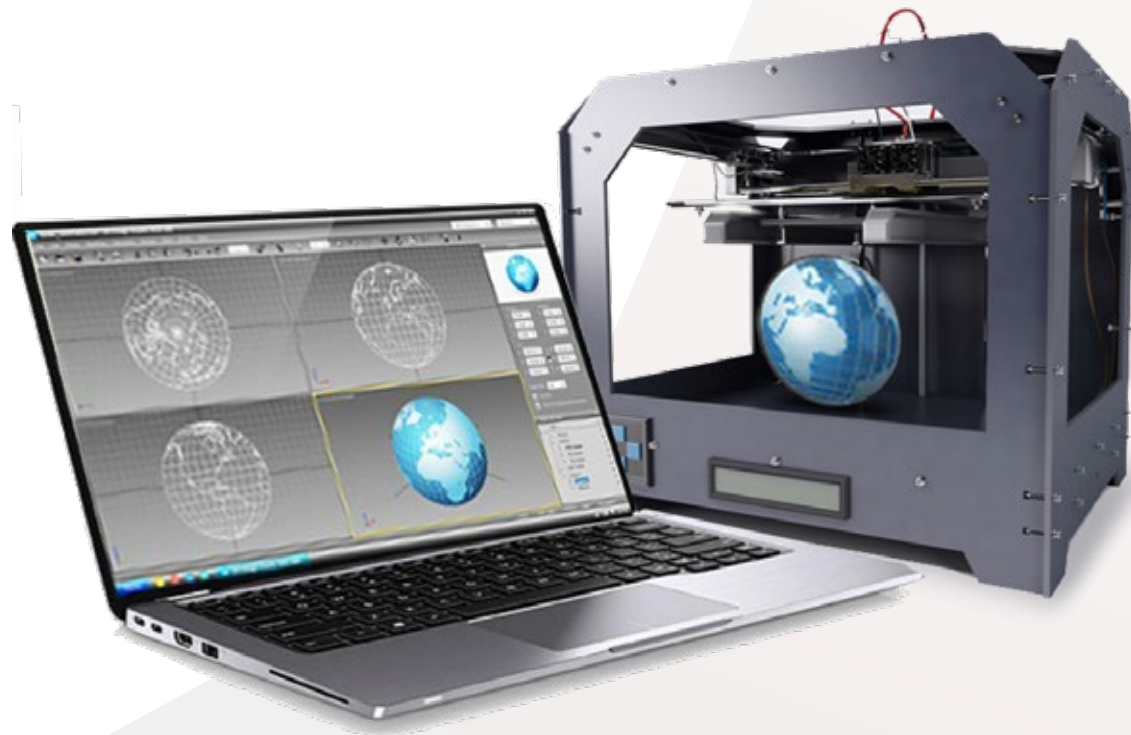
- ▶ Formulation of problem
- ▶ Determined Team work
- ▶ Long term partnerships
- ▶ Development Oriented



# Engineering Services



# Prototype



precifyimpex is specialized in design and product development. We build close relationships with companies, both large and small, and help them and their crucial projects get where they need to be.

Our innovative engineers and machinists provide a suite of design and development services including complex modeling, new product design, industrial design, 3D printing, rapid prototyping, CNC fabrication and associative design tool development.

Our methodology is to always plan for evolution and to create project flexibility from day one. And our goal is to get our clients where they need to be.

Precifyimpex has a precision machine shop specializing in short-run CNC Machining, either of your design or ours. We also provide rapid prototyping services which allow you to create your products and ideas. The models look and feel just like the real, completed product.

This prototype allows engineers to verify the design for initial assembly, as well as for disassembly and maintenance. It can be used for testing and quality control and as a marketing tool for promotion, presentation and focus group research.

Mockups also allow non-engineering departments to touch, feel and provide their input to design the best quality product. Changes are inexpensive at the mock-up level and increase exponentially as you reach the production tooling level.

# 2D drafting 3D modeling & printing

We make 3D part modelling and 2D Drawings, including Sub-Assemblies and Assembly with BOM. The way we create 3D Models and Drawings will be convenient for you to make revisions and future modifications.

Our Drawings meets commonly used International design standards and specifications. We also incorporate your special requirements based on your needs.



## PDF to CAD Conversion

### *Raster to Vector :*

Paper drawings are generally very bulky to carry. If you have large volumes of such paper drawings, we can convert them to Computer Aided Design (CAD) drawings.

We offer CAD conversions, convert raster to vector, convert CAD raster to vector, 2D to 3D conversions, paper to 2D conversions, paper to CAD conversions, vector to image conversions, digitization services, AutoCAD conversions.

### *Vector to Images :*

We take your rough sketches, rough drawings or manually corrected drawings, and generate them into professionally edited, engineering drawings.

We offer vector image conversions, CAD vector to raster, vector to images, image file format converters, bitmap to vector conversions, vector to raster conversions, image conversions to Computer Aided Design (CAD), 2D to 3D conversions, paper to 2D conversions, AutoCAD conversions, and mechanical CAD conversions.

### *Conceptual Design*

Innovative ideas bring new concepts and we are here to make the sculpture of your new idea.

And, while designing the concept, we consider the issues, concerns and goals to come out with the best and effective concept.



## Engineering Analysis

We offer you Engineering Analysis services using the latest FEA software. We carry out all the pre and post processing activities. The analysis types include:

Finite Element Meshing  
-----

Structural Analysis  
-----

Computational Fluid Dynamics  
-----

Dynamic Analysis  
-----



Thermal Analysis  
-----

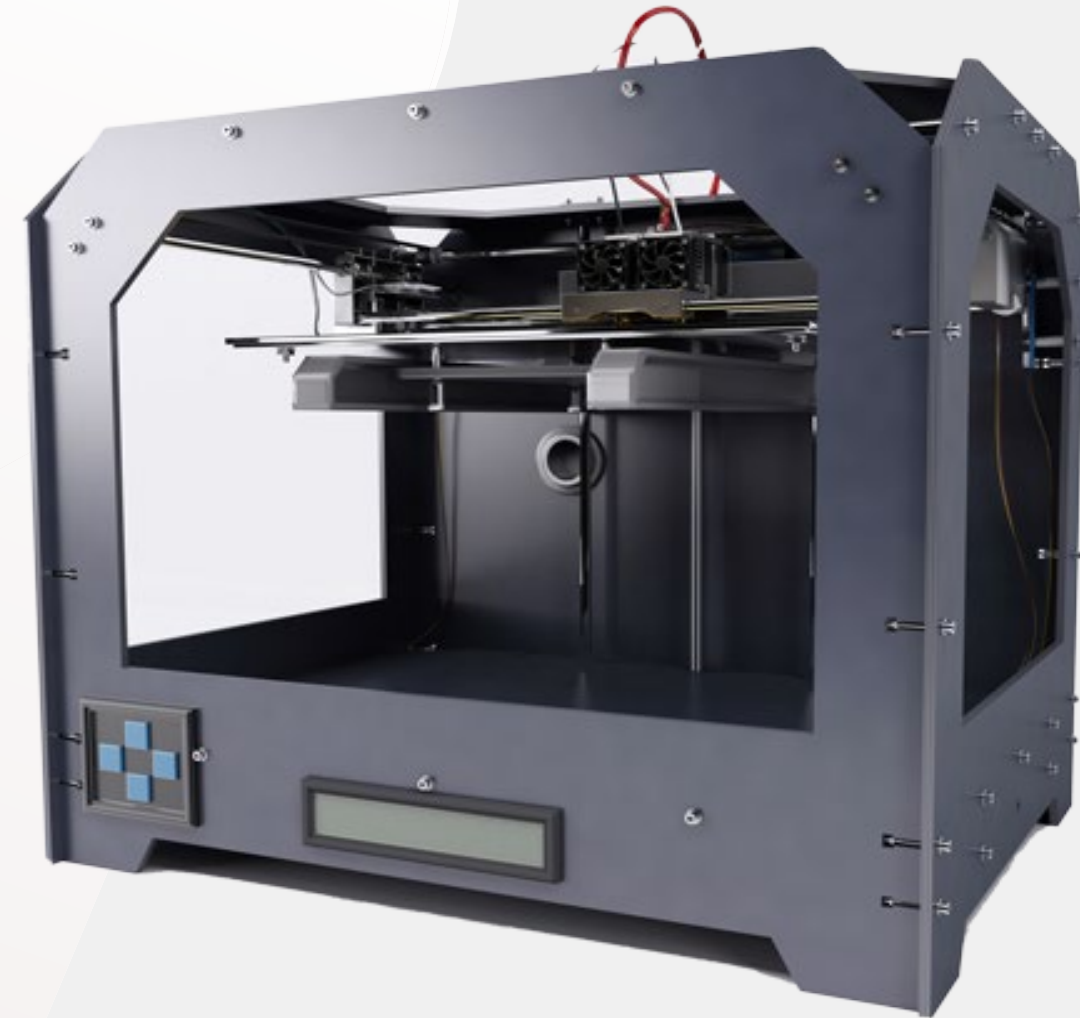
Fatigue Estimation  
-----

Process Simulation  
-----

Mechanism Simulation  
-----

## 3D Printing:

3D Printing, also known as Rapid Prototyping or Additive Manufacturing is bringing about the next industrial revolution and Precify Impex is leading the change by bringing in new ideas to enable manufacturers and designers in India to realise their products faster and in an economical way. It is not just the design; even the manufacturing processes are also becoming more agile, efficient, and customized due to the flexibility and the robustness offered by the 3D printing technologies.



Precify Impex brings you the ability to take your 3D CAD designs from the CAD screen to a realistic part in-hand with the 3D printing process as easy as pushing a button. Fit and form models, print assembly parts, manufacture production tools on the fly and even produce a small batch of production parts – these are some of the applications of 3D Printing that Additive Manufacturing System offers today.

To address the ever-increasing demand for advanced materials, accuracies and durable parts from the industry, Precify Impex offers two of the most versatile 3D printing technologies viz. FDM (Fused Deposition Modelling) and PolyJet technology to meet the challenging expectations of the Industrial Designers and Engineers.

## 3rd party Inspection

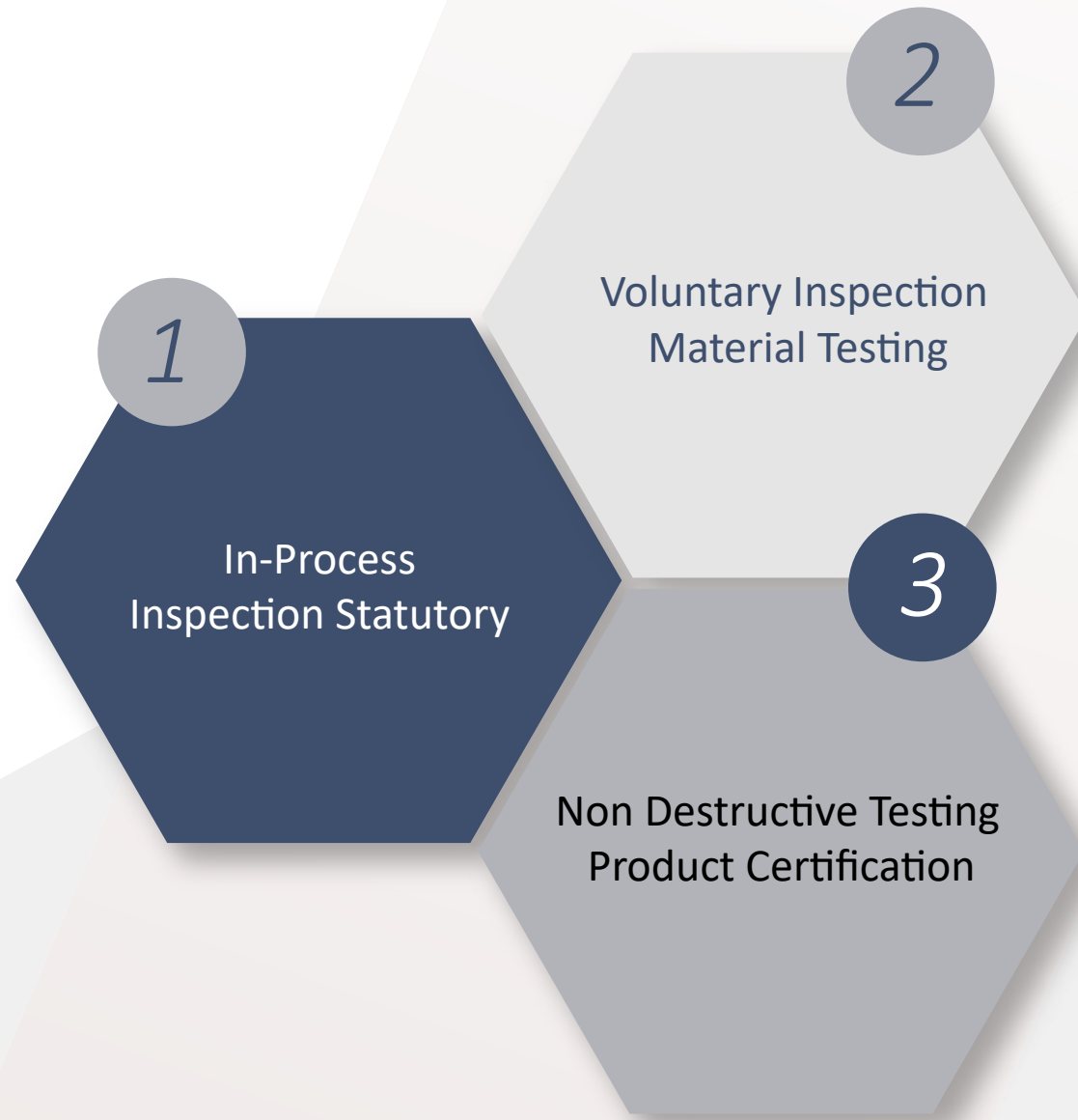


Percify Impex carries out 3rd party Inspection services, where we Inspect and Audit Supplier facilities, Equipment, products on a local and worldwide basis. These Inspections and Audits lets Percify Impex grant certifications to your parts, products, and services that you receive from your suppliers. Percify Impex also provides Technical Inspection, verification, testing, and Conformity Assessment for Industries.

Percify Impex is built around the core principles of Independence and transparency to help us reach our mission of providing Top Quality services around the world.

Our Engineers cross verify the quality and the performance of products meet the obligatory requirements. Our goal is to help industries minimize the environmental impact of Industrial Activities, assure safety, and ensure safe and healthy working environments for the employees.

**Our Services can be divided into :**



Percify Impex offers a comprehensive package of Integrated services that will assist you in all the stages from design to procurement to Manufacturing to Commissioning into operation.

# Reverse engineering

Reverse Engineering is the process of discovering the technological principles of a part or assembly or a complete machine through analysis of its structure, function and operation. The purpose is to reduce design decisions from end products with little or no additional knowledge about the procedures involved in the original production.

We have abilities to scan and measure a product with the help of 3D Laser scanner, structured light digitizers and then reconstruct it as a 3D model. The measured data alone is represented as a point cloud.

This processes the model into more usable format such as triangular faced mesh, a set of NURBS surfaces or a CAD model. Then for the manufacturing and further references, those models can be drafted and detailed in 2D CAD. We can also reverse engineer the product while performing Value Engineering.



# Machined Parts



Precify Impex is not just an Industry. It is cumulated with Experienced and skilled Machinists and Engineers, who are capable of manufacturing from simplest to complex components with the Right skills and Technology in the Quickest Turnaround time Possible.

Unique products tend to need unique components to complete its task. Percify Impex adapts Cutting Edge machine techniques to cut precisely and maintain a consistent accuracy and Quality by meeting the required Quantity of the customer.

Our Machine parts are produced from Alloy Steel, Aluminum, Copper, Bronze, Brass, Plastic, Stainless Steel, steel among others. With the modern Cutting Edge technology we can produce consistently accurate and High-quality Machined parts with no Errors

Our Machine parts are produced from Alloy Steel, Aluminum, Copper, Bronze, Brass, Plastic, Stainless Steel, steel among others. With the modern Cutting Edge technology we can produce consistently accurate and High-quality Machined parts.

# Precifyimpex Production Capabilities

- 1 Turning
- 2 Milling
- 3 Grinding
- 4 Heat treatment
- 5 Honing
- 6 Welding
- 7 Brazing

## *Design Assistance:*

We also assist in designing the Materials or components you need for your product. We will assist you in designing a manufacturable and sustainable model. Our design Engineers will assure that your design will be capable of producing and fulfilling the appointed tasks

*Our few products*





# Fabrication components

Percify Impex also handles Metal fabrication projects. We are understanding the needs of the Industries and delivering them successfully by building Machines and structure from the Raw Materials.

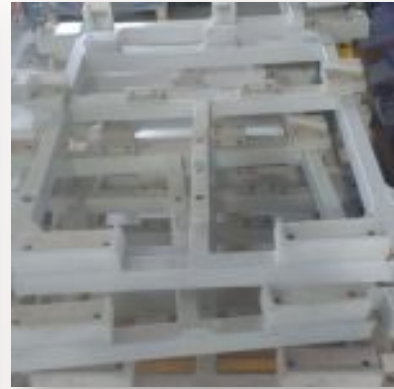
Percify Impex limits the need of Contractors to do the tedious task to find and work with Different vendors and their Conditions. Percify Impex with its Network of Vendors to gets your Machines and structures built.






As a standard company. We do follow the proper and right procedures for and manufacturing or machining processes. Our each step in the manufacturing process would have a detailed inspection and hence make the product traceability easy. We also undertake turnkey projects. Factory building, office furniture, lab furniture and many more. Hence Percify Impex can be found as a one stop solution for all your requirements.

We would be very happy to take any other innovative or development kind of works also. So that we can render our services in all aspects and areas.

## Our few products



## Contacts

-  Office: +91 804-201-7068
-  Email : [Info@precifyimpex.com](mailto:Info@precifyimpex.com)
-  Working Time  
9am to 6pm Monday - Saturday

